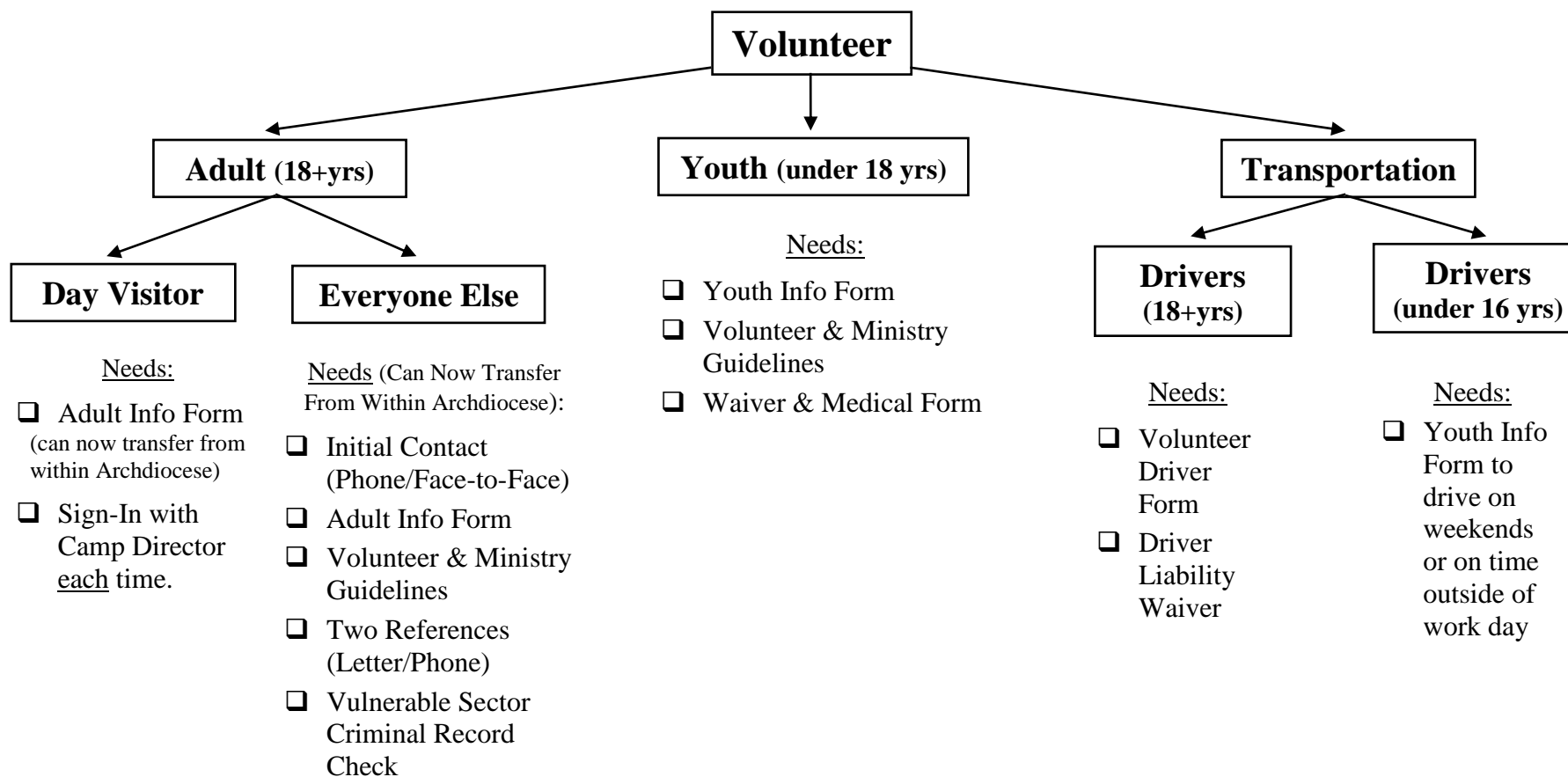




CAMP LEMIEUX PROTOCOL FOR RESPONSIBLE MINISTRY: OVERVIEW

It is the policy of the Archdiocese to monitor all Volunteer Ministry Positions. In addition, it is the policy of Camp Lemieux to monitor all Employed Positions. Fundraising and Caretaking events will only require signing in with contact and emergency medical info.



Adult Info Form Covers: contact info, emergency info, medical info, ministry interests, day visitor sign-ins, references contact info, office confirmation of reviewed documents.

Youth Info Form Covers: contact info, emergency info, medical info, ministry interests, parent release for volunteering, accepting transportation & weekend leave permission.

Waiver & Medical Form Covers: photo release, drop off and pick up info, liability release for camp activities/transportation & medication schedule & release.